



Western Area
Power Administration

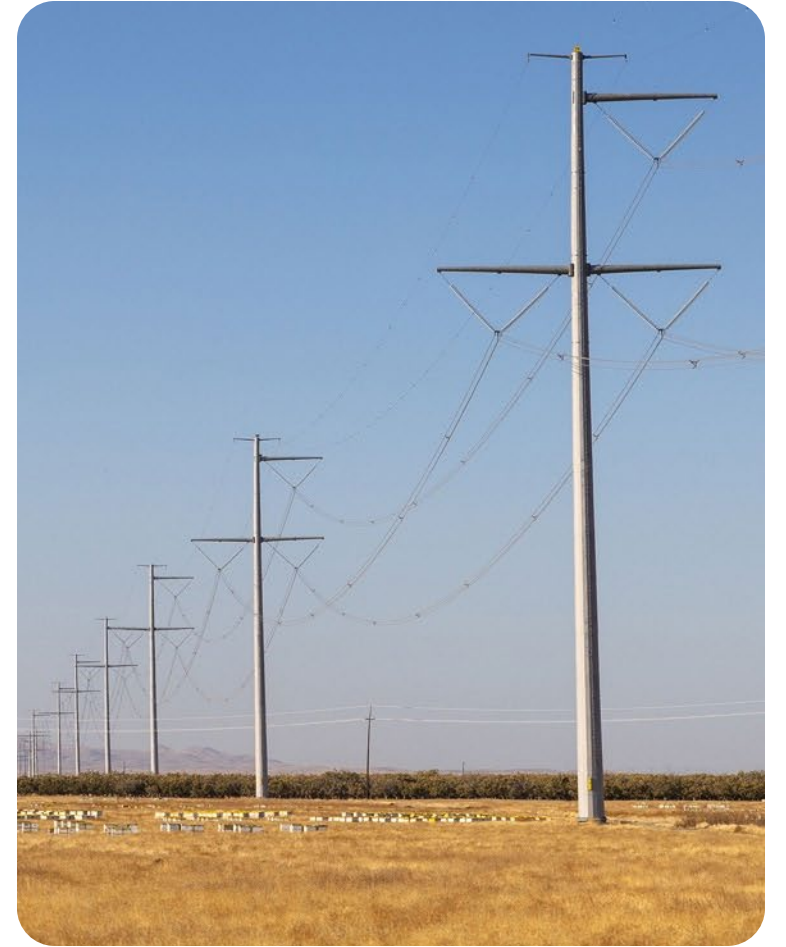
Western Area Power Administration

Tracey A LeBeau, Administrator & CEO

Mid-West Electric Consumers Association Annual Meeting

December 9, 2025





Thank You for Your Partnership

WAPA Priorities



Continue to deliver power to customers and meet contractual obligations



Maintain reliable grid operations



Ensure ability to respond to extreme weather conditions

Key Market Principles

- Maintain and ensure reliability.
- Determine and manage outcomes that support WAPA's mission.
- Balance lowest possible cost with sound business principles.



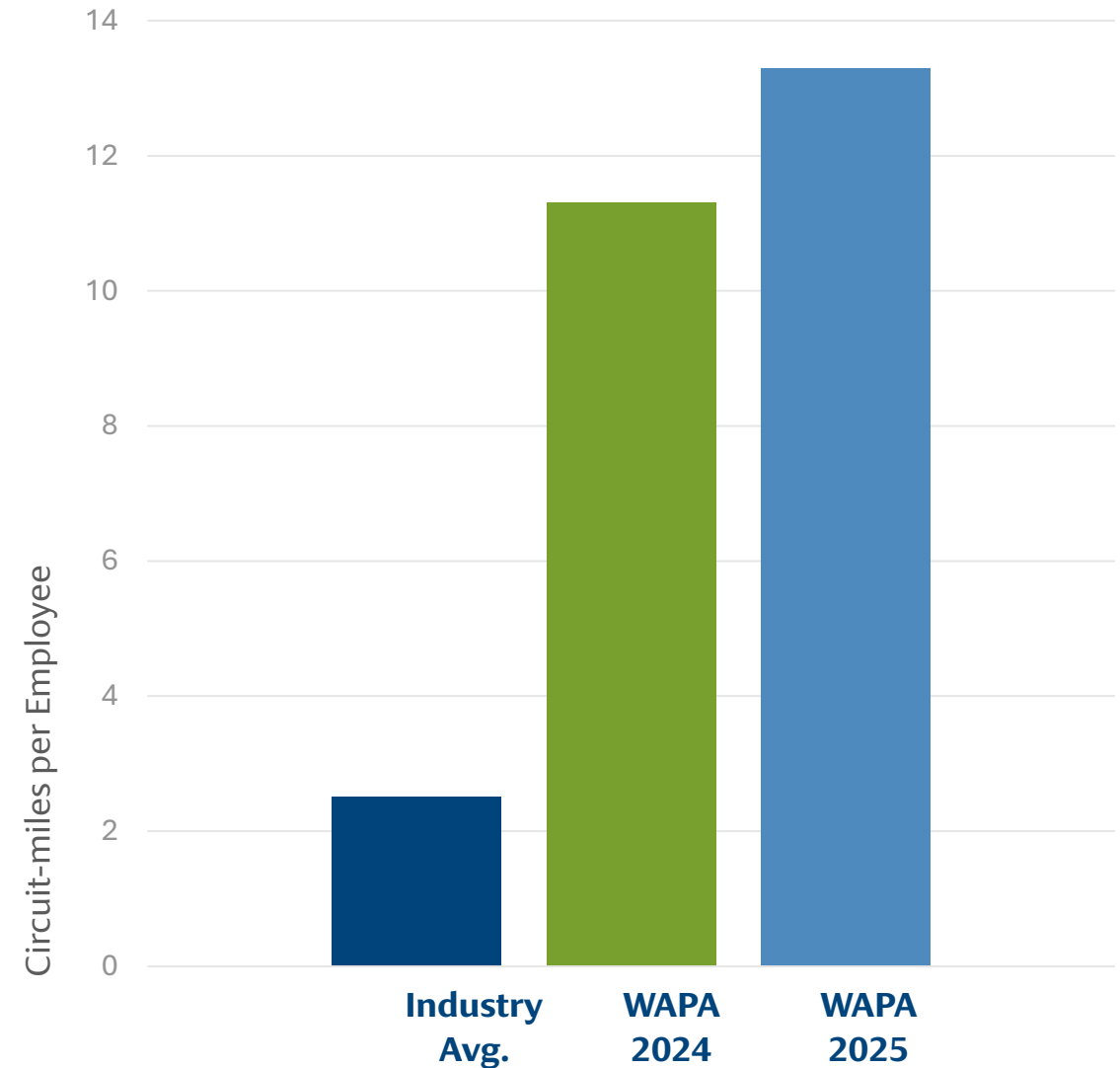
Cost-Based, Customer-Focused

- Net-zero impact: costs recovered from customers, every dollar goes back into operating and strengthening the system
- Borrowing authority used carefully, tied to customer value
- Fairness, transparency, stable rates



Running Leaner than Industry Peers

- **Industry Average:** 2.5 miles/employee
- **WAPA 2024:** 11.4 miles/employee
- **WAPA 2025:** 13.3 miles/employee



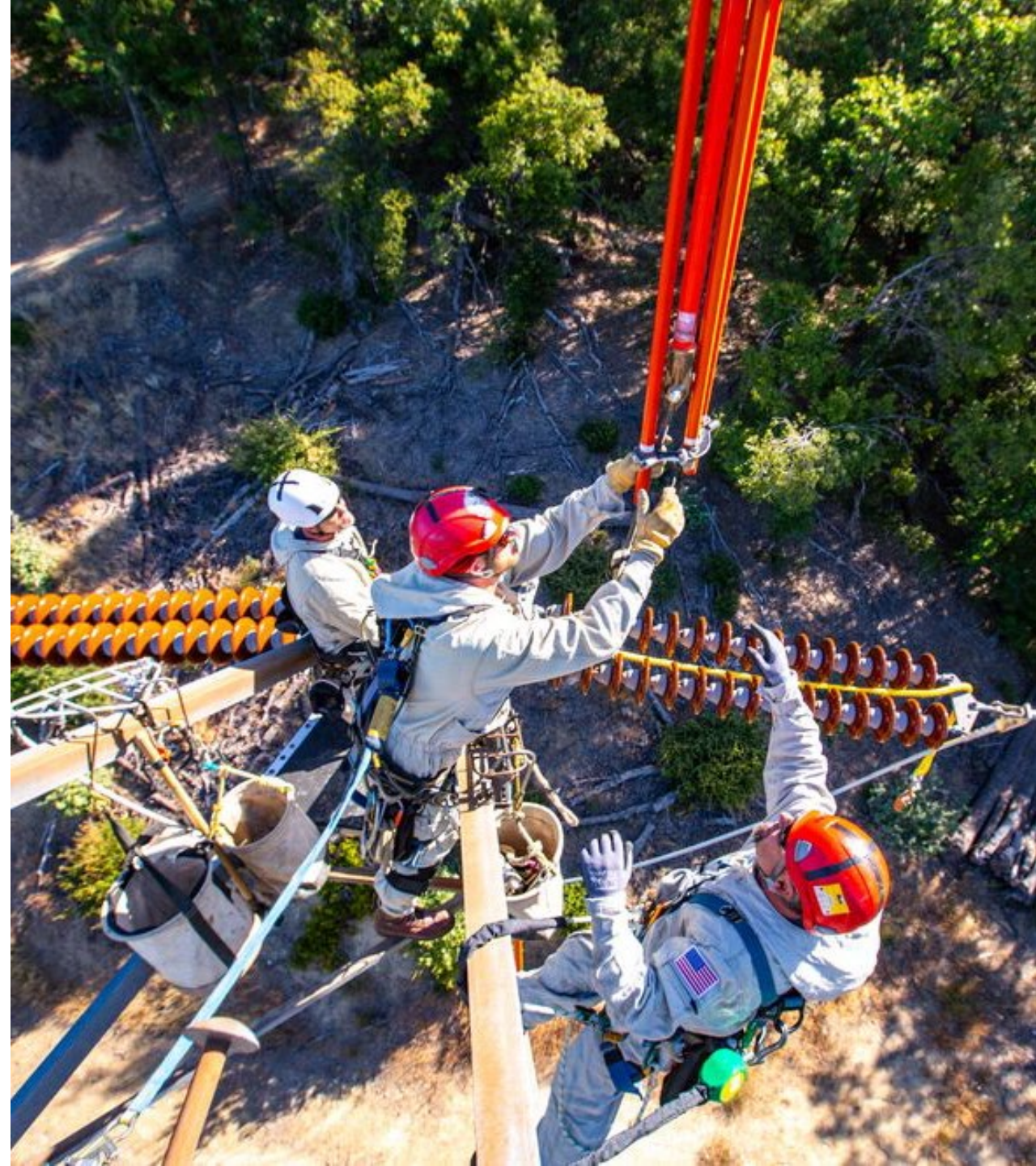
Prioritizing the Highest-Risk Assets

- Focus on assets with greatest reliability & safety impact
- 200+ projects identified through 2030
- + \$800M potential RTO-assigned projects
- Workload immense, commitment strong



Executing on the Most Urgent Needs

29 priority projects in FY25
19 milestones complete
10 milestones on track for Q1 FY26
130 miles rebuilt/reinforced
+500 MW capacity added



Safety & Security are Non-Negotiable

- No project advances without meeting safety standards
- Cyber & physical security investments continue
- Compliance & protection work windows are intentional



Reliability Through Partnership

- Severe storms & fires tested the grid
- Reliability held through planning, mutual aid, coordination
- Outage communication & access windows remain critical



Delivering Together

- Vast footprint, lean workforce rising demand
- Sequencing critical work first
- Investing smartly in infrastructure
- Financial discipline & safety always central
- Partnership remains essential



Contact WAPA

Tracey A. LeBeau

WAPA Administrator & CEO

lebeau@wapa.gov

720-822-0643

WEBSITE

wapa.gov

LINKEDIN

[western-area-power-administration](https://www.linkedin.com/company/western-area-power-administration)

