

Upper Great Plains Regional Update

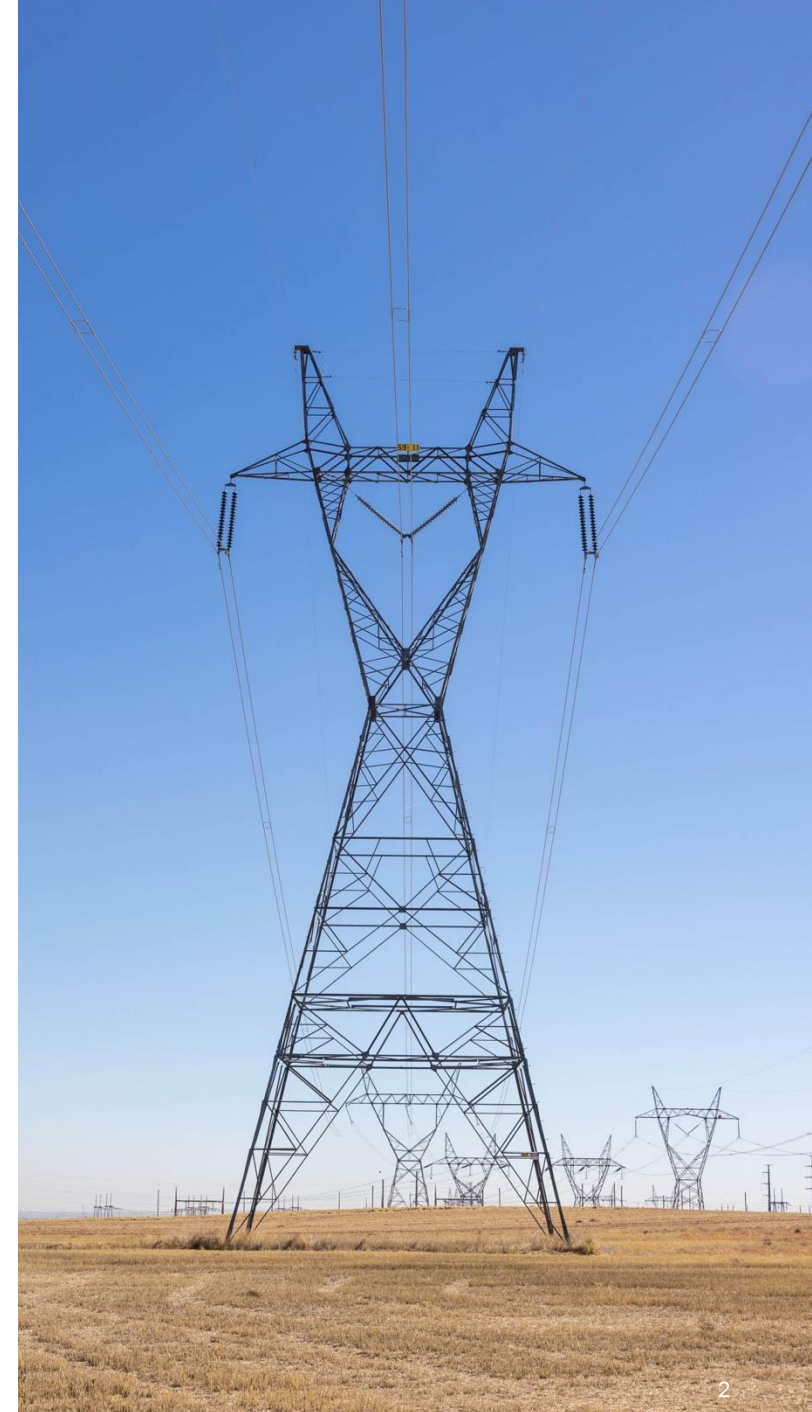
Mid-West Annual Meeting

Gayle R. Nansel | Acting SVP and UGP Regional Manager | Dec. 8, 2025



Topics of discussion

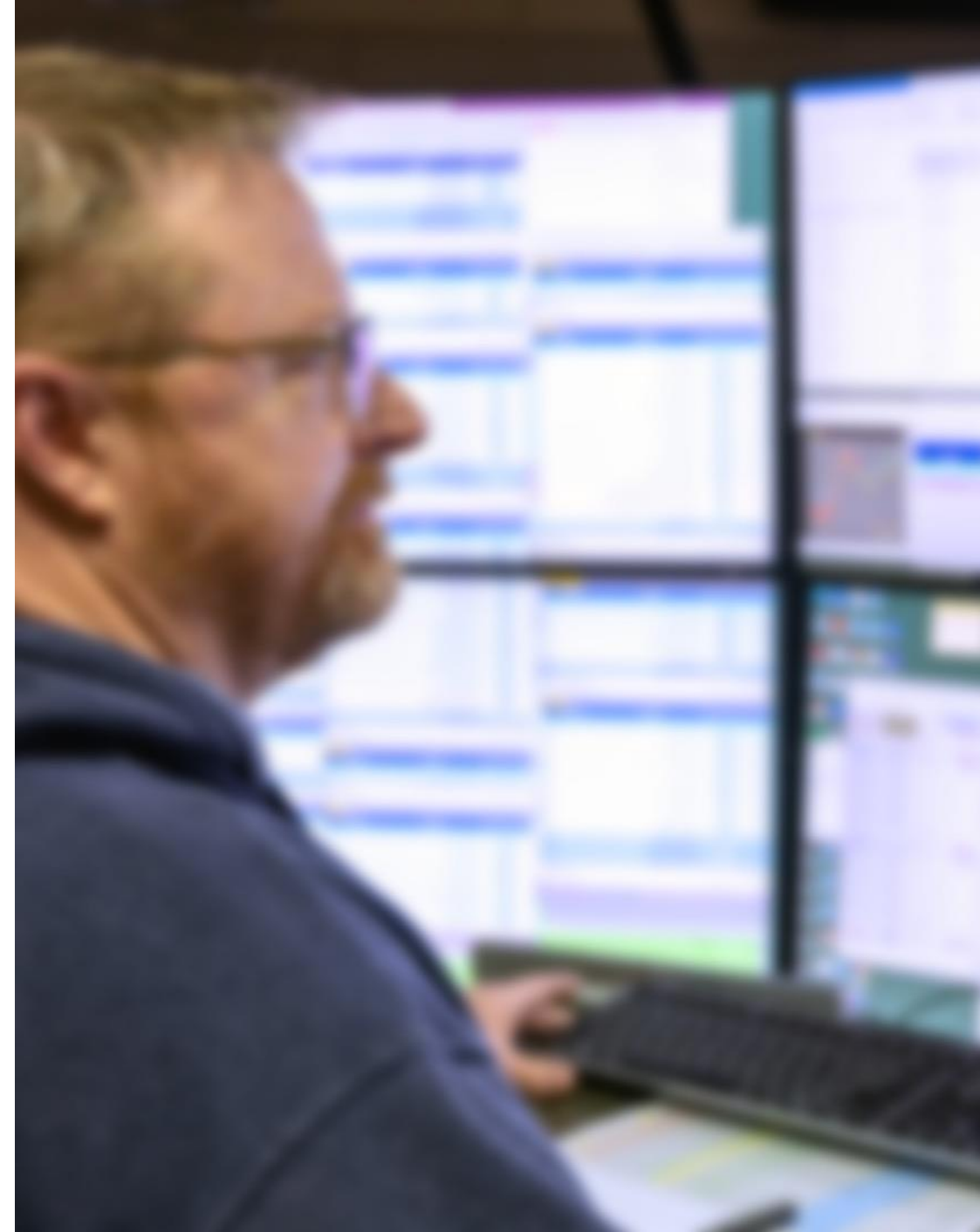
- UGP Management Updates
- Operations & Transmission
- Rates
- Purchase and Sales



New EMS System

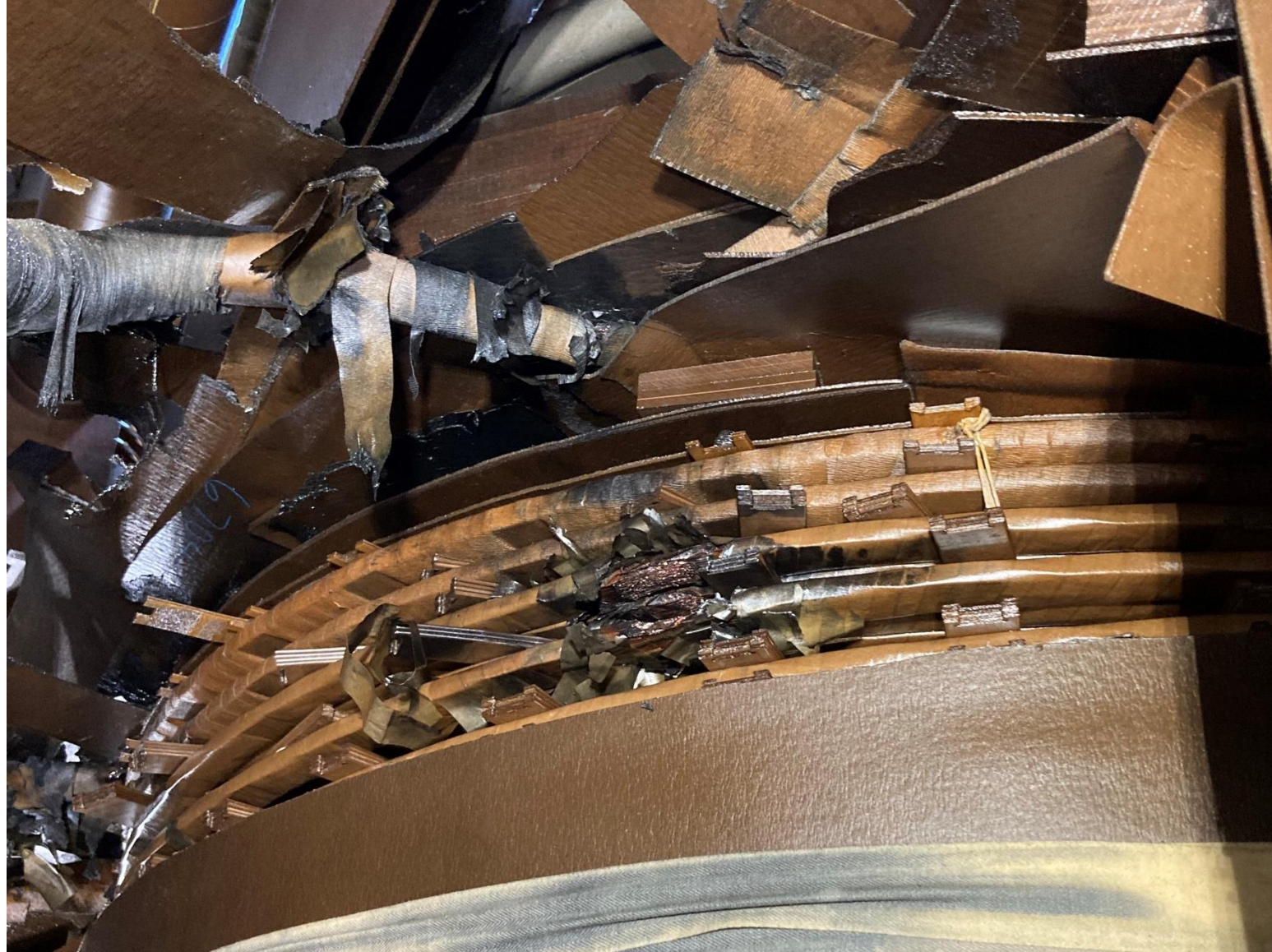
OSI Monarch System

- June 4, 2025, operational
- TOP for UGP and Customers
 - 136,000 points
 - 425 substations
 - 13,000 miles of line



Crossover Series Reactor Project

- Demo and concrete complete in the next couple of weeks
- Expecting reactor delivery mid-January and structures mid-February
- Expected In-Service early April 2026



Denison Transformer Failure

- Received Western States approval for reprogramming of funds on 11/10/2025
- Purchase Request was submitted and approved by WAPA Procurement 11/17/2025
- Exemption requests have been submitted to DOE for approval since over 1M. Waiting on approval.
- Specification is being drafted.



SPP Integrated Transmission Planning (ITP), Notifications to Construct (NTCs), Designated Transmission Owner (DTO) Responsibilities under SPP RTO Membership

- Annual Process, SPP identifies Network Upgrades driven by Reliability Needs and/or Economic Needs, and assigns certain of those NTCs to SPP DTOs based upon interconnections/upgrades to DTO's facilities, State ROFR rules, etc.
- UGP has received a number of NTCs from the 2024 & 2025 studies as the DTO.
- UGP has and plans to accepted the NTCs assigned to us as a DTO and plans to build the Network Upgrades affecting our existing substations & transmission lines to maintain ownership/control in those facilities



2024 ITP NTCs – UGP, Status Update

UGP has accepted two major transmission NTCs assigned to us as a DTO and plans to build the Network Upgrades affecting our existing substations & transmission lines to maintain ownership/control in those facilities.

- New Belfield-Maurine-New Underwood-Laramie River 345 kV Line
 - ✓ A new 439-mile, 345 kV line from Belfield to Maurine to New Underwood to Laramie River.
 - ✓ Brings large economic benefits to North Dakota and the SPP region.
 - ✓ Aims to address the extra high voltage deficiency in this area and benefit rural communities in western Nebraska and the Dakotas.
- New Dawson County – Williston 230 kV Line
 - ✓ Would provide reliability and economic benefits and greatly reduced congestion on the area's 115 kV system.



2025 ITP NTCs – UGP, Status Update

UGP expects to receive three major projects out of the 2025 ITP study as a DTO and plans to build the Network Upgrades affecting our existing substations & transmission lines to maintain ownership/control in those facilities.

- Belfield – Roundup 345 kV New Line
 - ✓ Resolves multiple needs in southeastern North Dakota by relieving thermal overloads and year ten congestion on the Belfield–Charlie Creek corridor.
- Ft. Thompson 345/230 kV New Transformer
 - ✓ Brings large economic benefits to this north-south 345 kV transfer corridor.
- Aurora 115 kV New Lines & White 345/115 kV New Transformer
 - ✓ This project provides an additional inlet for power from the 345 kV system, alleviating stress on the 115 kV network and restoring voltage levels



Next Steps

- UGP is working on detailed plans, costs, and schedules for the expected 2025 ITP NTCs that it plans to accept. Timeframe to respond to SPP for those NTCs is in the March 2026 timeframe.
- Working with our TIP office to enable UGP to utilize WAPA TIP Loans to fund/build certain NTCs that are critical to UGP.
- The combined 2024 ITP and 2025 ITP NTCs current total estimate is in the \$270M range. (\$335M range with 1.25 Loan margin applied)



Pick Sloan Eastern Division Rate Summary

P-SMBP--ED Firm Electric Service	Current Under P-SED-F15 As of Jan. 1, 2025	Under P-SED-F15 Second Step As of Jan. 1, 2026	Second Step Percentage Change
P-SMBP--ED Composite Rate (mills/kWh)	30.00	31.87	6.2%
Firm Demand Rate (\$/kilowatt-month)	\$6.60	\$7.00	6.1%
Firm Energy Rate (mills/kWh)	16.55	17.60	6.3%
Firm Peaking Demand Rate (\$/kilowatt-month)	\$6.05	\$6.40	5.8%
Firm Peaking Energy Rate ¹ (mills/kWh)	16.55	17.60	6.3%

¹ Firm peaking energy is normally returned. This charge will be assessed in the event firm peaking energy is not returned.



Purchases & Sales

FY25

- ✓ Purchases \$47.9M
- ✓ Market Exp. of \$12.1M
- ✓ Non-firm Sales \$33.8M

FY24

- ✓ FY 24 Purchases \$51.3 M
- ✓ Market Expense \$9.5M
- ✓ Non-firm Sales \$30.7M

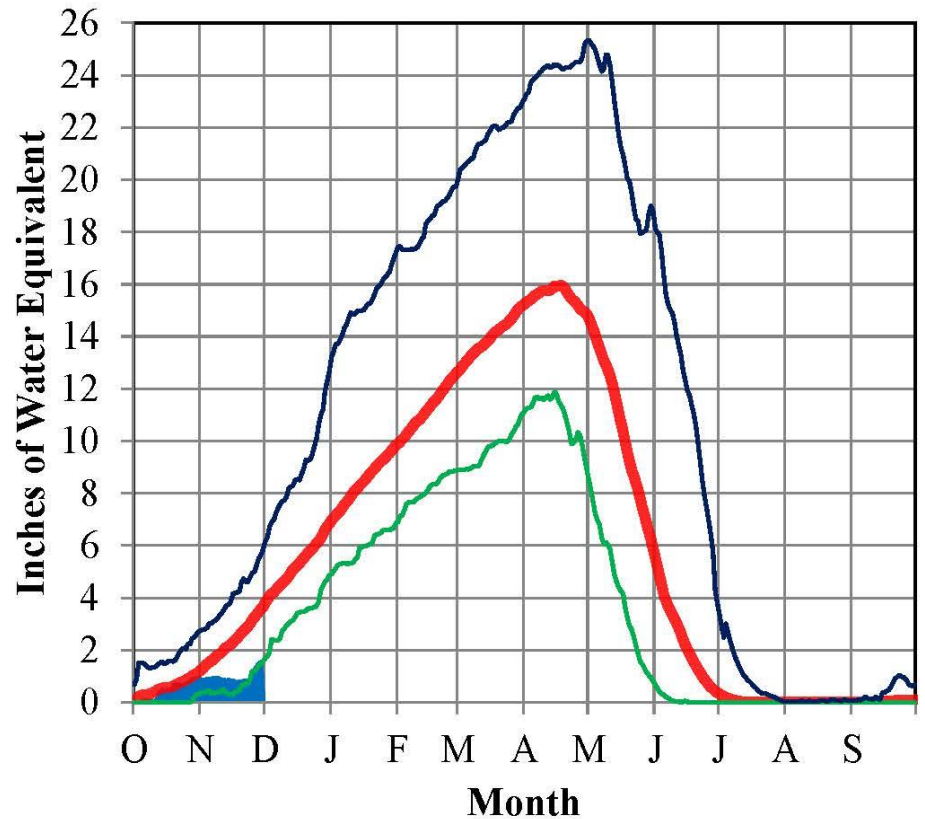
Very similar years netting
expenses to Non-firm sales



Missouri River Basin – Mountain Snowpack Water Content 2025-2026 with comparison plots from recent high and low years

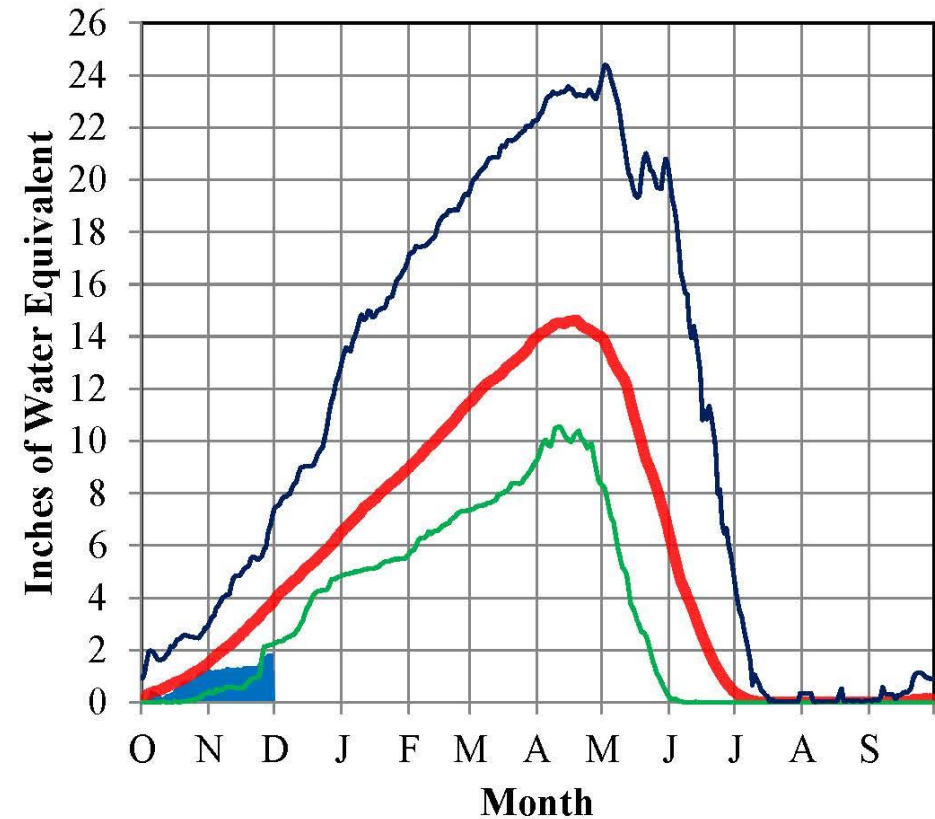
30-Nov-2025

Total above Fort Peck



2025-2026 1991-2020 Ave *Minimum *Maximum

Total Fort Peck to Garrison

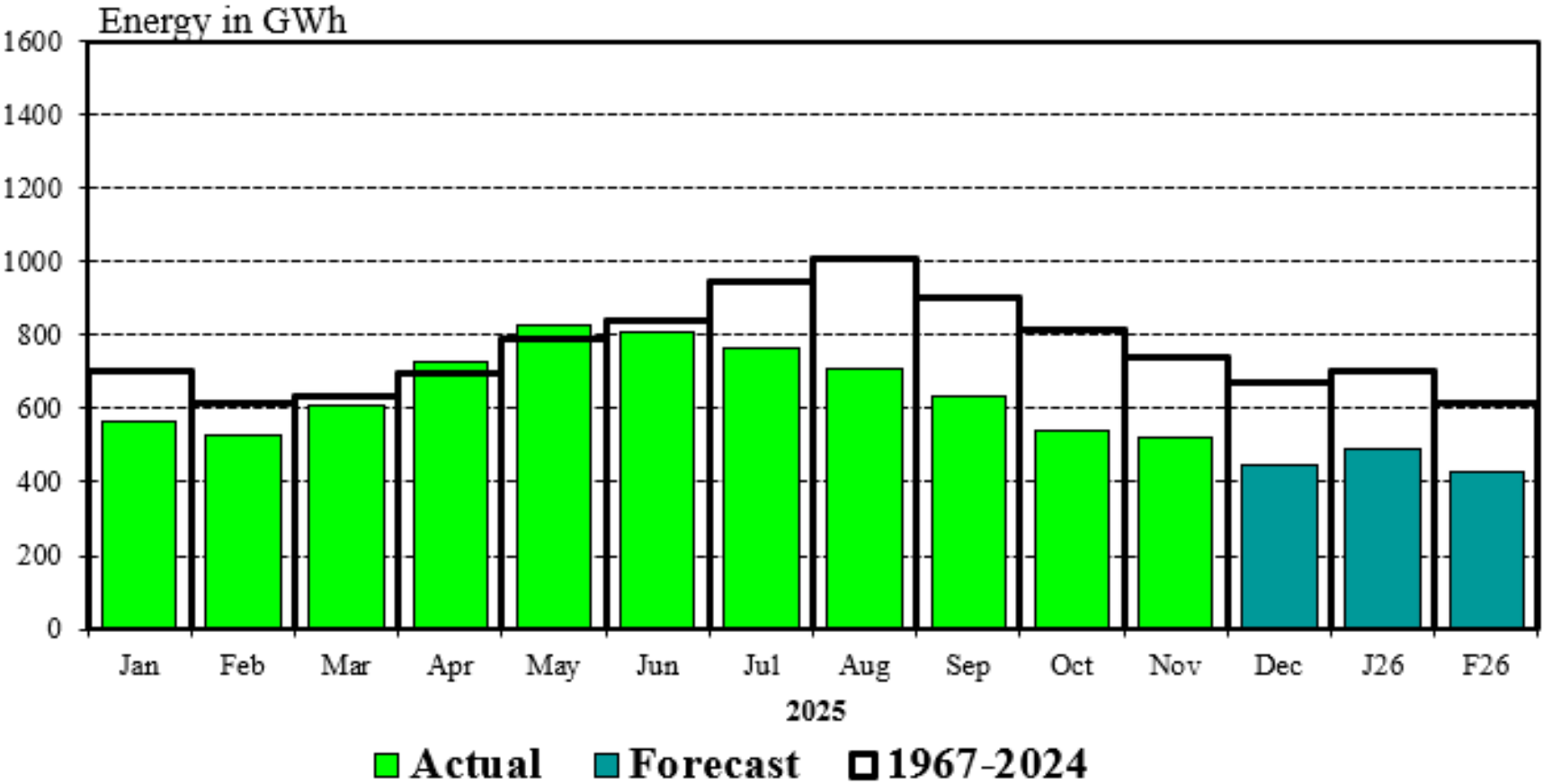


2025-2026 1991-2020 Ave *Minimum *Maximum



Missouri River Mainstem System

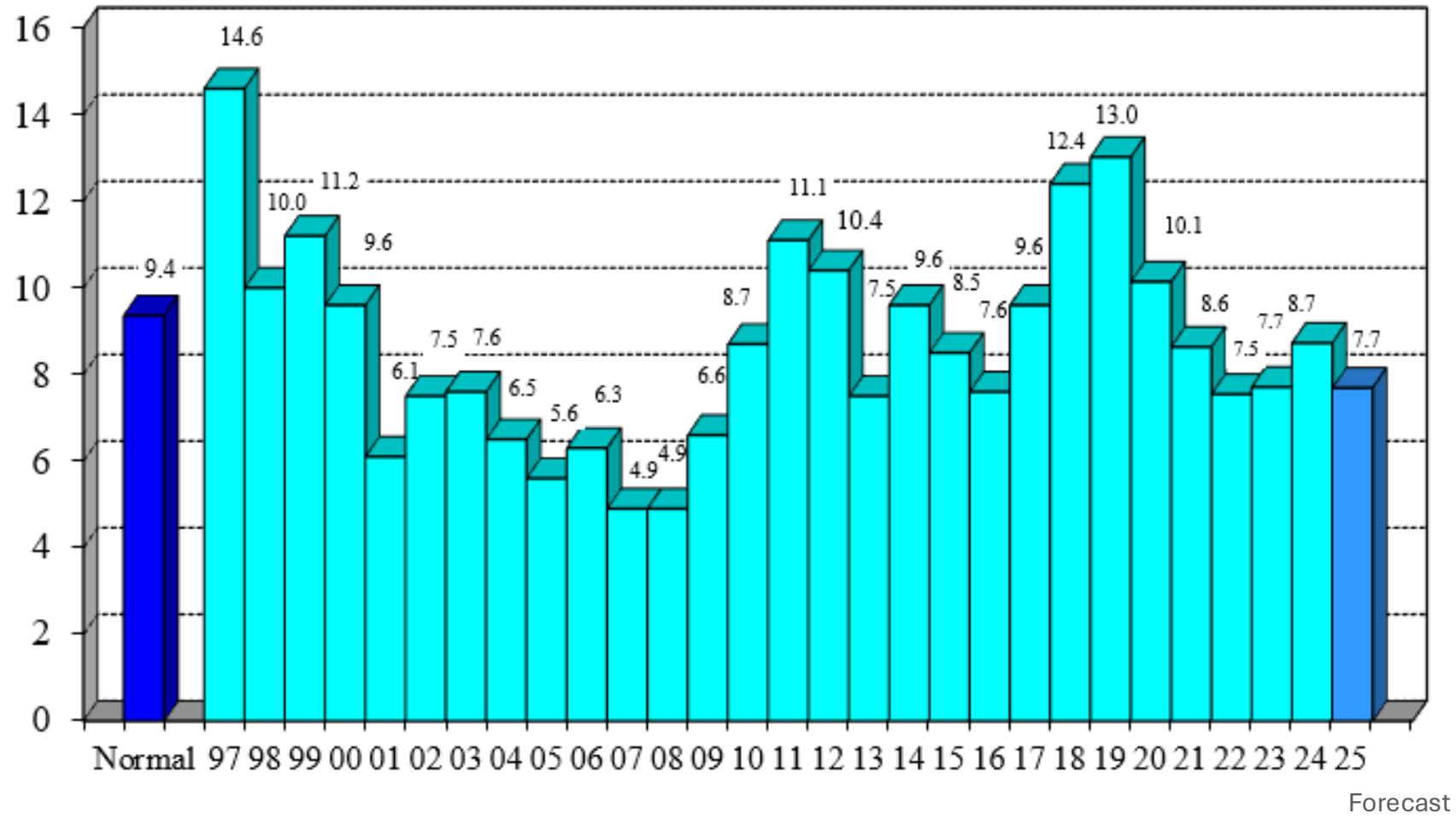
Forecasted Energy Generation



Upper Basic: 7,680 GWh
Basic: 7,690 GWh
Lower Basic: 7,700 GWh



CY 2025 Mainstem System Generation



December 1, 2025 Forecast

Upper Basic: 7.7

Lower Basic: 7.7



Contact WAPA

Gayle Nansel

Nansel@wapa.gov

406-255-2800

WEBSITE

wapa.gov

LINKEDIN

western-area-power-administration

